

Alaska Department of Fish and Game

Habitat Section
Southeast Region



114-34-10200 Tributary 10

ADDITION

Water body name:

Survey date: 9/16/2022

Quad: Juneau A-5

Species & Lifestage:

Upper Reach Latitude: 58.143801 **Longitude:** -135.618358

Survey crew: DK, RR

Lower Reach Latitude: 58.143093 **Longitude:** -135.619425

Findings: We surveyed this uncataloged stream using a backpack electrofisher and GPS and captured juvenile coho salmon. The tributary stream seeps out of the ground, potentially fed by a larger tributary just to the east, and flows through a narrow channel with some subterranean flow (Table 1; Figures 1–3).

Recommendations: Add this uncataloged stream to the anadromous waters catalog for rearing coho salmon (Figure 4).

Nomination: Pending

Table 1.—114-34-10200 tributary 10 survey data.

| Waypoint | Latitude | Longitude | Notes | Stream Width ft | Stream Substrate | Habitat Features | Gradient % | Sample Effort | Sample Results |
|----------|-----------|-------------|--|-----------------|------------------|------------------|------------|---------------|----------------|
| 1855 | 58.143691 | -135.618614 | Stream flows under rootwad. Other coho escaped before picture. | 4-6 | Small Gravel | | 2-4 | EF | 2 CO |
| 1856 | 58.143805 | -135.618379 | Channel seeps out of the ground. Likely fed from larger creek to the east. | 2-4 | | | 2-4 | EF | 2 CO |
| 1857 | 58.143820 | -135.618296 | Larger stream to the east, not predicted by LiDAR. Parallels forest edge. | 6-8 | Fine Organic | | 2-4 | Not Fished | |



Figure 1.—Juvenile coho salmon captured at waypoint 1855.



Figure 2.—Channel with some subterranean flow at waypoint 1855.



Figure 3.—Channel seeping out of ground at waypoint 1856.

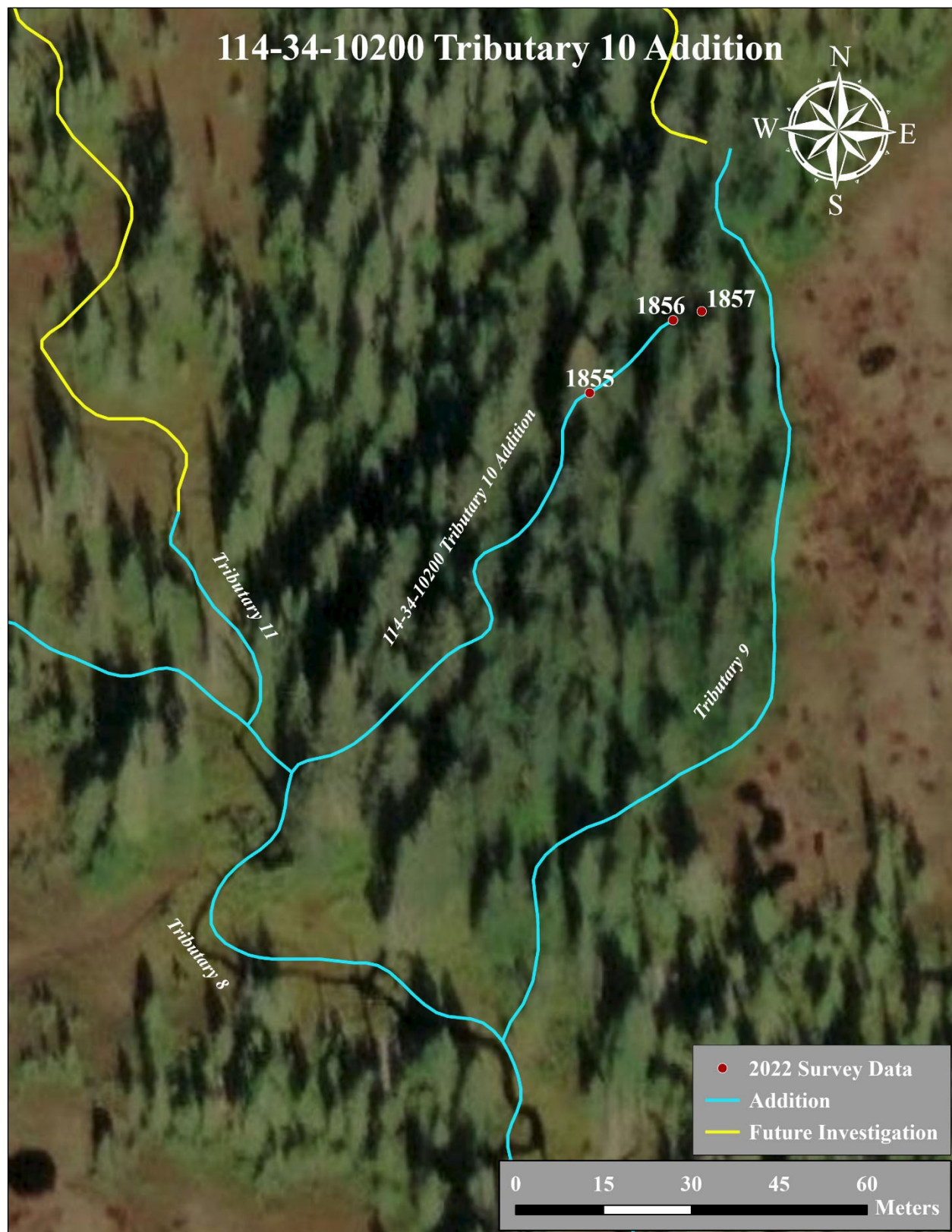


Figure 4.—114-34-10200 tributary 10 addition map.